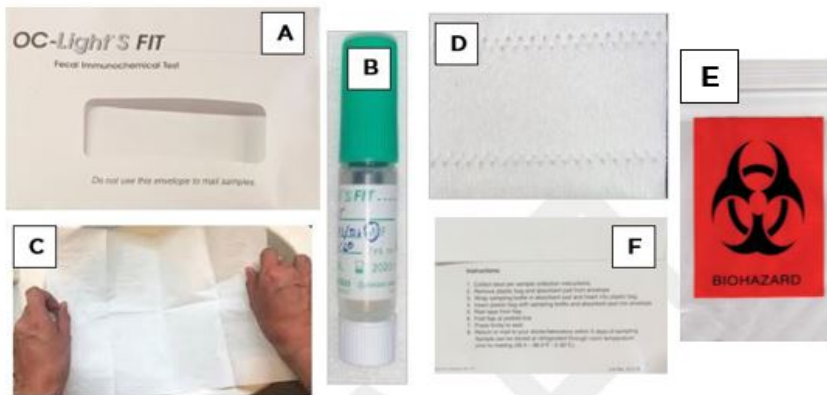


How to Take the FIT Stool Test at Home

The FIT Stool Test Kit includes:

- A. Kit envelope
- B. Sample bottle
- C. Collection paper
- D. Absorbent pad
- E. Biohazard bag
- F. Return envelope



1. Write in your name, date of birth (DOB) and collection date on sample bottle.

The stool sample cannot be tested without the collection date.



2. Get toilet ready for collection.

Place collection paper on top of toilet water.

Have bowel movement.



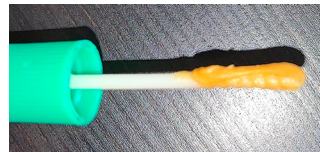
3. Collect your stool sample.

Open green cap of the sample bottle by twisting and lifting.

Scrape the surface of the stool with the sample probe.

Cover the grooved portion of the sample probe with stool sample.

Close sample bottle tightly. Do not reopen bottle.



4. Package sample bottle.

Wrap sample bottle in absorbent pad.

Place wrapped bottle into biohazard bag and seal.



5. Return sample bottle.

Place biohazard bag into return envelope.

Peel tape from flap and fold flap over to seal.

Mail or drop the card off at the clinic within 2 days of collection.

Cards returned later than 2 days cannot be processed.

